

A photograph of a rice paddy field with water and several birds wading in it. The background shows a lush green field under a clear sky. The water in the foreground is calm, reflecting the surrounding greenery. Several birds, likely waterfowl, are scattered across the water, some standing and some wading. The overall scene is peaceful and natural.

Outline of MAFF's policy for enriching biological diversity in the rice paddy field in Japan

Kouki Takada

MAFF

Ministry of Agriculture, Forestry and Fisheries

Environment Policy Division, Minister's Secretariat

Characteristic of the rice paddy fields in Japan

Total cultivated acreage in Japan (4.5million square kilo meters)

54%
Rice paddy fields

46%
Other fields

85% is equipped with modern irrigating system



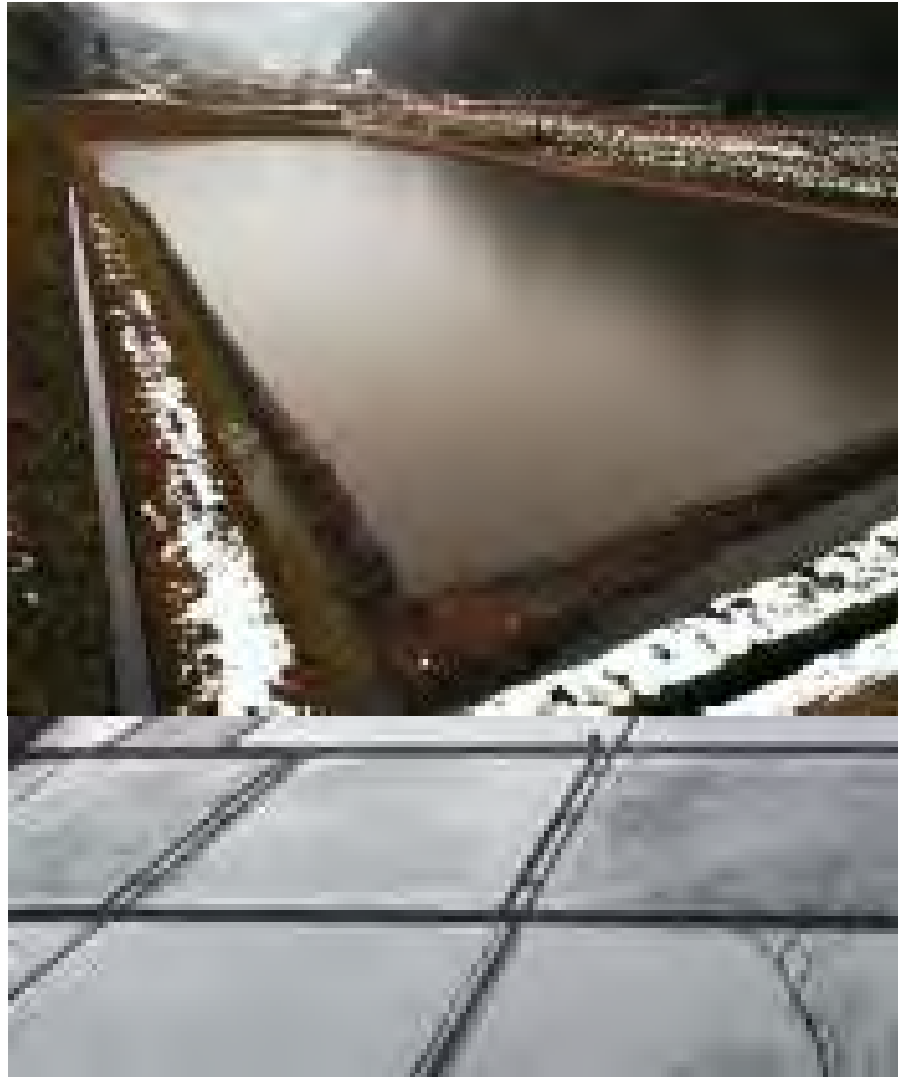
Resolution X. 31 “Enhancing biodiversity in rice paddies as wetland systems”

Paragraph 10

NOTING that some water management approaches, such as flooding of rice paddies when they are not in use for rice production, have been adopted in order to provide suitable habitat for some fauna, including migratory waterbirds, and to control weeds and pest insects;

Winter flood management

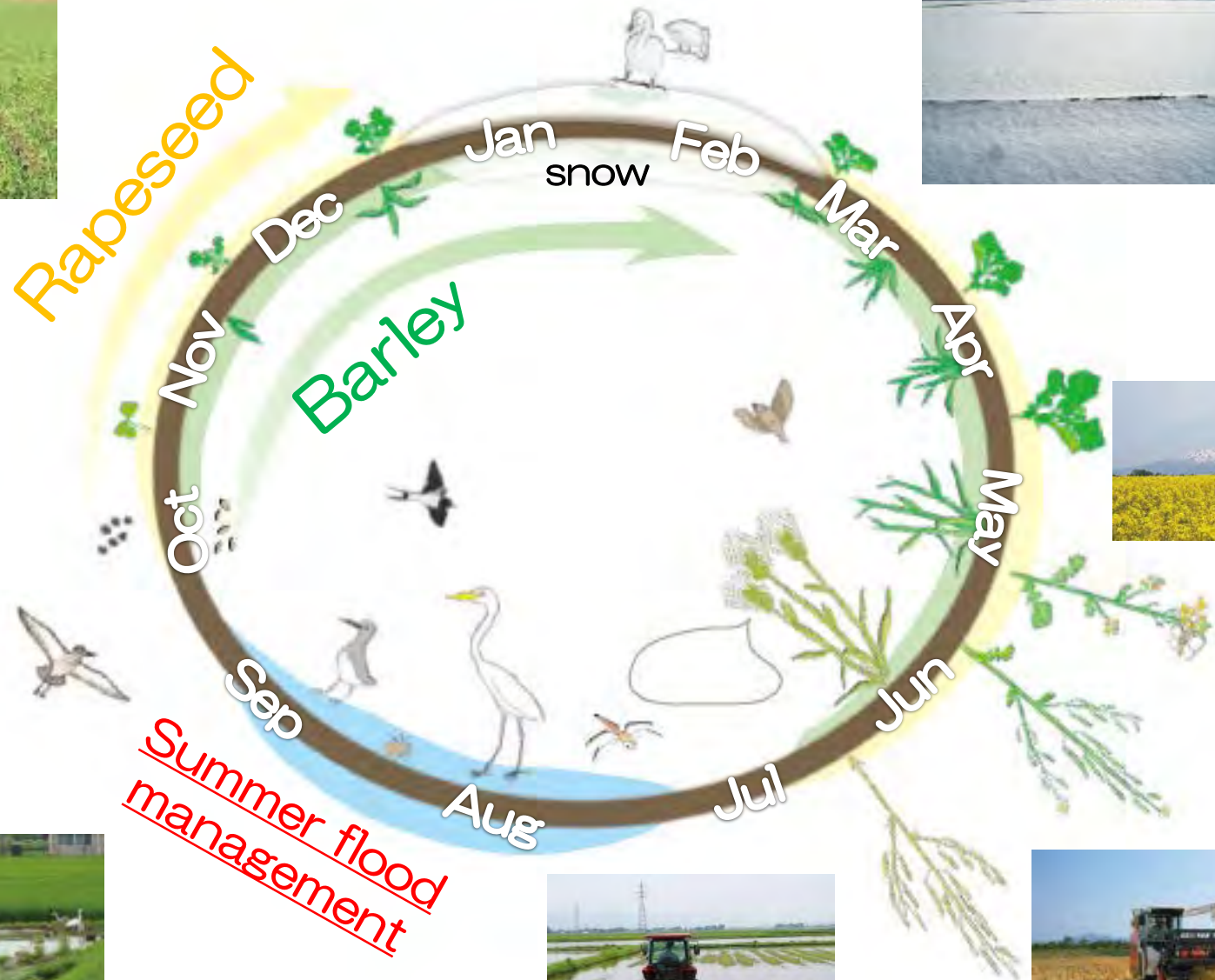
Winter flood management



Non winter flood management



Summer flood management



Summer flood management



Shonai Town, Yamagata Prefecture, Japan

Direct Payment for Environmentally Sound Farming

Target of support

- Farmers (including corporations), community farming collectives undertaking joint sales management, and farmers groups

Requirements for support

- Farming activities that are effective for preventing global warming and conserving biodiversity in conjunction with reducing chemical fertilizers and synthetic agricultural chemicals by 50% or more → *eligible to receive subsidies (direct payment)*

<Examples of eligible farming activities (joint initiatives)>

Planting cover crops (green manure)



(Lotus flower)



(Oat)

Applying compost that effectively stores carbon to contribute to preventing global warming



(Distributing compost)



(Manufacturing compost in a compost shed)

Organic farming

Resources and Payment

- The grant covers additional costs for eco-friendly farming activities

- **National government and local municipalities share the costs at the ratio of 1:1**

- **Maximum amount of payment: 80,000 yen/ha**

<Examples of initiatives for specially approved regions>

Winter flood management



Summer flood management



Banker plants



(Using natural enemies by planting sorgho (as a banker plant) around eggplant)

Living mulch



(Contributing to storing carbon by planting wheat (living mulch) in the furrows between soybeans)

* The regions and crops that are eligible for support will vary depending on prefectures.

A large flock of birds, possibly geese or swans, is captured in flight against a clear, deep blue sky. The birds are scattered across the upper two-thirds of the frame, creating a sense of movement and activity. Below the sky, a calm body of water reflects the light, with a line of trees and a distant shoreline visible. The overall scene is peaceful and scenic, typical of a late afternoon or early evening setting.

Thank you for your attention

Have a Good Evening !